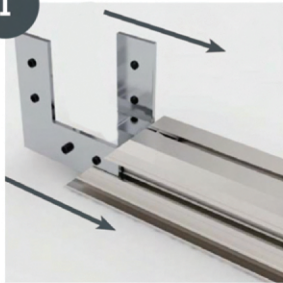


Double Sided Assembly

The Double Sided Frame is an aluminium frame consisting of aluminium lengths, L-shaped corner brackets, internal corner brackets, straight brackets (where needed), feet (where needed), and a fabric skin with silicone edge. This guide will show you the steps needed to construct the frame and also the correct technique for inserting the fabric skin.

1



Step 1

Each corner required 2x L-shaped corner brackets

Slide them into the frame.

3



Step 3

Make sure that the two frame pieces meet at a point with no gaps between them. Repeat this step for all 4 corners.

2

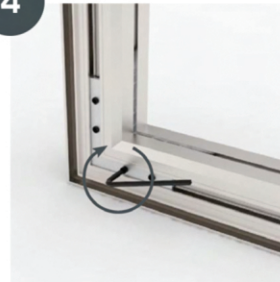


Step 2

Slot the next frame piece into the three corner components, making sure that they all line up with the correct slots.

Note: Do not tighten the corner bracket screws yet. This can make it difficult to get the other sides in.

4



Step 4

Once you have all of the corner brackets in place tighten them with an Allen Key (supplied).

Note: Be sure not to overtighten the screws as this may cause damage.

Double Sided Assembly

5



Step 5

For freestanding frames with feet, put the bolts through the bottom of the foot then through the pre- drilled holes in the frame. Next, put the washer, spring-washer and nut on the bolt and tighten.

Note: Be sure not to overtighten the bolts as this may cause damage.
(freestanding frames only)

6



Step 6

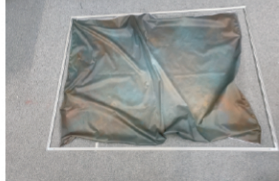
Your foot should now look like this.
Repeat Step 6 for all other feet.

(freestanding frames only)

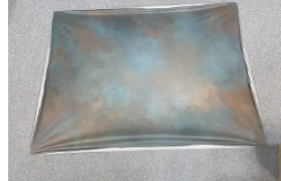
SILICONE EDGE GRAPHIC FITTING INSTRUCTIONS

CORRECT GRAPHIC FITTING

STEP 1 - LAY GRAPHIC OUT



STEP 2 - INSERT ALL 4 CORNERS



STEP 3 - INSERT CENTRES OF EACH SIDE



STEP 4 - INSERT FINAL EXTREMITIES FOR A PERFECT FIT



INCORRECT GRAPHIC FITTING



FAILURE TO FIT CORNERS FIRST WILL RESULT IN THE ABOVE

Frame care instructions

Machine washable and hang to dry. **DO NOT TUMBLE DRY.**